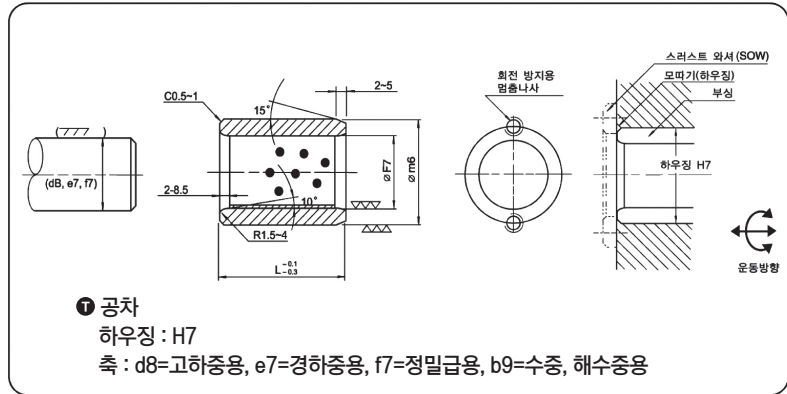


가이드 부품

guide parts





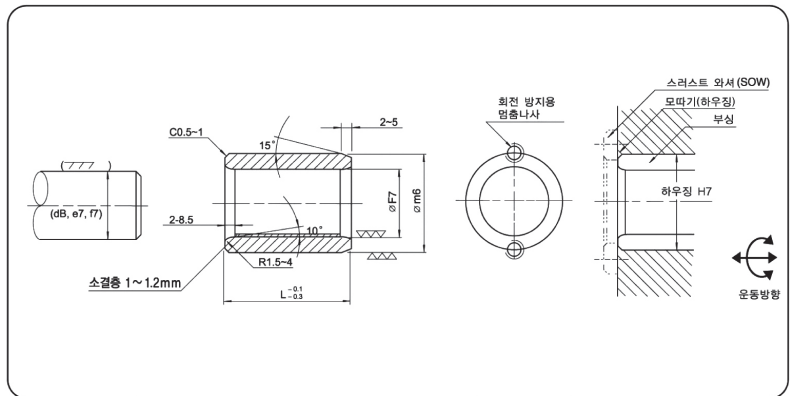
Material : #500SP(CAC304 + Graphite)

Model No.	치수 및 공차		길이(L _{-0.1} ^{-0.3})								
	내경 d F7	외경 D m6	8	10	12	15	16	20	25	30	35
	8	12	●	●	●	●					
	10	14	●	●	●	●		●			
	12	15		●	●	●		●	●	●	
	13	19		●	●	●		●	●	●	
	14	20		●	●	●		●	●	●	
	15	21		●	●	●		●	●	●	
	16	22		●	●	●	●	●	●	●	●
	18	24			●	●	●	●	●	●	●
	20	28				●	●	●	●	●	●
	20	30					●	●	●	●	●
	25	33					●	●	●	●	●
	25	35					●	●	●	●	●
	30	38						●	●	●	●
	30	40						●	●	●	●
	31.5	40						●	●	●	●
	35	44						●	●	●	●
	35	45						●	●	●	●
	40	50						●	●	●	●
	40	55						●	●	●	●
	45	55							●	●	●
	45	56							●	●	●
	45	60							●	●	●
	50	60							●	●	●
	50	62							●	●	●
	50	65							●	●	●
	55	70								●	●
	60	74								●	●
	60	75								●	●
	63	75								●	●
	65	80									●
	70	85									●
	70	90									●
	75	90									●
	75	95									●
	80	96									●
	80	100									●
	90	110									●
	100	120									●
	110	130									●
	120	140									●
	125	145									●
	130	150									●
	140	160									●
	150	170									●
	160	180									●

● SOB ● SBSB

스트레이트 부싱

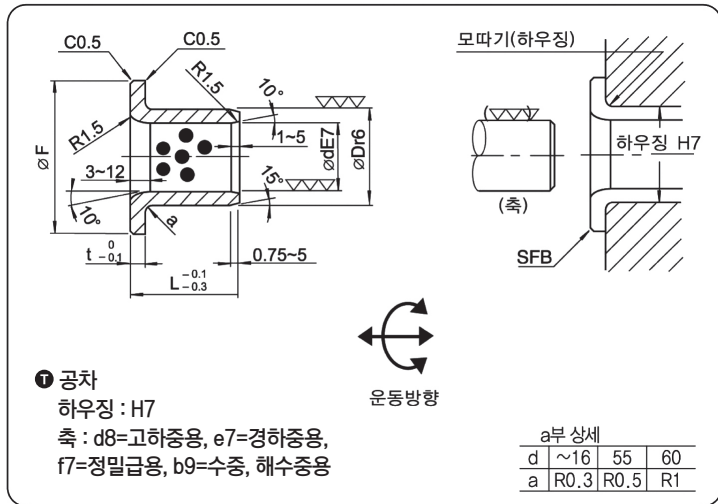
SOB / SBSB



Material : SBSB : SS400 + Sintered Layer

길이											d	D	적용할 와셔
40	50	60	70	80	100	120	130	140	150				
											8	12	
											10	14	SOW-10
											12	18	SOW-12
											13	19	SOW-13
											14	20	SOW-14
											15	21	SOW-15
											16	22	SOW-16
											18	24	SOW-18
											20	28	SOW-20
											20	30	"
											25	33	SOW-25
											25	35	"
											30	38	SOW-30
											30	40	"
											31.5	40	-
											35	40	SOW-35
											35	45	"
											40	50	SOW-40
											40	55	"
											45	55	SOW-45
											45	56	"
											45	60	"
											50	60	SOW-50
											50	62	"
											50	65	"
											55	70	SOW-55
											60	74	SOW-60
											60	75	"
											63	75	-
											65	80	SOW-65
											70	85	SOW-70
											70	90	"
											75	90	SOW-75
											75	95	"
											80	95	SOW-80
											80	100	"
											90	110	SOW-90
											100	120	SOW-100
											110	130	-
											120	140	SOW-120
											125	145	-
											130	150	-
											140	160	-
											150	170	-
											160	180	-

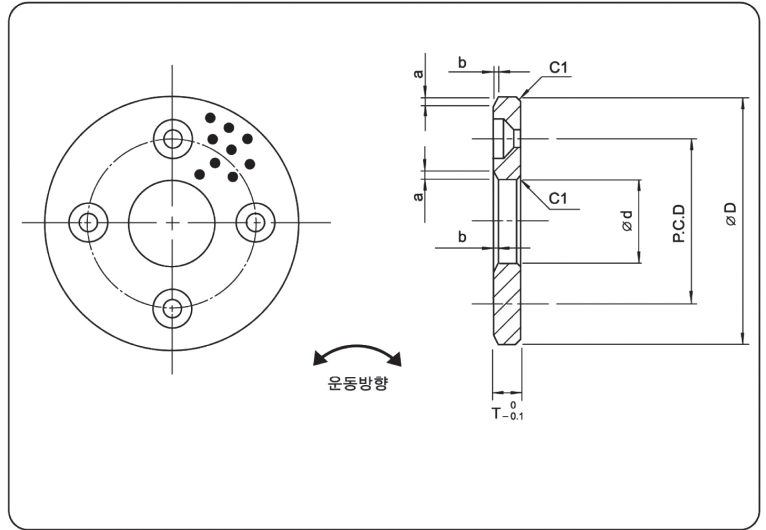
Order / 주문예 Model No. - EA
SOB-20-28-40-10EA



M Material
 #500SP(CAC304 + Graphite)

Model No.	내경 (d)	외경 (D)	플랜지 지경 (F)	플랜지 두께 (t)	길이(L ^{-0.1/-0.3})															
					15	20	25	30	35	40	50	60	67.5	80	100					
SFB	10	+0.040 +0.025	14	+0.034 +0.023	22	2	1015	1020												
	12	+0.050 +0.032	18	"	25	3	1215	1220												
	13	"	19	+0.041 +0.026	26		1315	1320												
	14	"	20	"	27		1415	1420												
	15	"	21	"	28	5	1515	1520	1525											
	16	"	22	"	29		1615	1620	1625											
	20	+0.061 +0.040	30	"	40		2015	2020		2030		2040								
	25	"	35	+0.050 +0.034	45			2520	2525	2530		2540								
	30	"	40	"	50	7.5				3030		3040	3050							
	31.5	+0.075 +0.050	40	"	50						31,535									
	35	"	45	"	60					3530		3540	3550							
	40	"	50	"	65					4030		4040	4050							
	45	"	55	+0.060 +0.041	70					4530		4540		4560						
	50	"	60	"	75					5030		5040		5060						
	55	+0.090 +0.060	65	"	80							5540		5560						
	60	"	75	+0.062 +0.043	90		10					6040	6050					6080		
	63	"	75	"	85										6367.5					
	70	"	85	+0.073 +0.051	105								7050					7080		
	75	"	90	"	110	10							7560							
	80	"	100	"	120									8060			8080	80100		
90	+0.107 +0.072	110	+0.076 +0.054	130									9060			9080				
100	"	120	"	150												10080	100100			
120	"	140	+0.088 +0.063	170												12080	120100			

Order / 주문예 Model No. - EA
 SFB-20-20-10EA

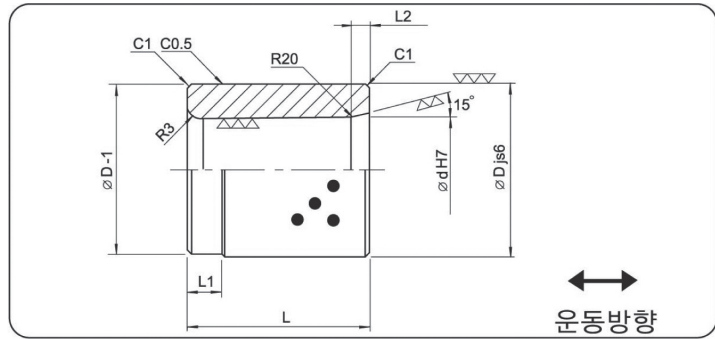


M Material
#500SP(CAC304 + Graphite)

Model No.	호칭경	d	D	P.C.D	고정나사		두께 (T)	a	b
					규격	수량			
SOW	10	10.2	30	20	M3	2	3	1.5	0.3
	12	12.2	40	28					
	13	13.2	40	28					
	14	14.2	40	28					
	15	15.2	50	35					
	16	16.2	50	35					
	18	18.2	50	35					
	20	20.2	50	35					
	25	25.2	55	40	M5	2	5	2.5	0.4
	30	30.2	60	45					
	35	35.2	70	50					
	40	40.2	80	60					
	45	45.3	90	70	M6	2	7	3	0.5
	50	50.3	100	75					
	55	55.3	110	85					
	60	60.3	120	90					
	65	65.3	125	95	M8	2	8	4	0.7
	70	70.3	130	100					
	75	75.3	140	110					
	80	80.3	150	120					
90	90.5	170	140	M10	2	10	5	0.9	
100	100.5	190	160						
120	120.5	200	175						

가이드 부상

SGB



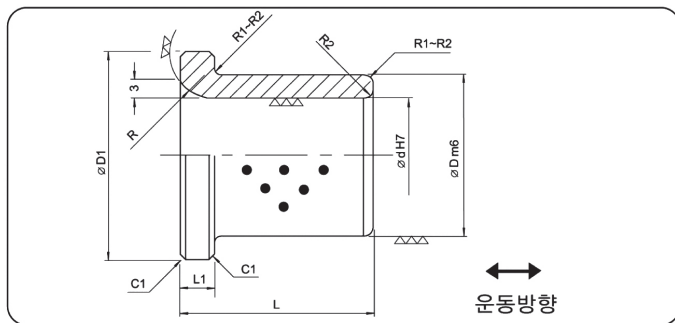
Material : #500SP(CAC304 + Graphite)

Model No.	내경	외경	길이		
	d	D	L	L1	L2
SGB	25 $\begin{smallmatrix} +0.021 \\ 0 \end{smallmatrix}$	40 ± 0.008	40 $\begin{smallmatrix} +0 \\ -0.2 \end{smallmatrix}$	10	5
	30 $\begin{smallmatrix} +0.021 \\ 0 \end{smallmatrix}$	50 ± 0.008	50 $\begin{smallmatrix} +0 \\ -0.2 \end{smallmatrix}$	10	
	35 $\begin{smallmatrix} +0.025 \\ 0 \end{smallmatrix}$	60 ± 0.0095	55 $\begin{smallmatrix} +0 \\ -0.2 \end{smallmatrix}$	15	
	40 $\begin{smallmatrix} +0.025 \\ 0 \end{smallmatrix}$	60 ± 0.0095	50,60 $\begin{smallmatrix} +0 \\ -0.2 \end{smallmatrix}$	10	
	50 $\begin{smallmatrix} +0.025 \\ 0 \end{smallmatrix}$	70 ± 0.0095	50,75 $\begin{smallmatrix} +0 \\ -0.2 \end{smallmatrix}$	15	10
	60 $\begin{smallmatrix} +0.030 \\ 0 \end{smallmatrix}$	80 ± 0.0095	60,90 $\begin{smallmatrix} +0 \\ -0.2 \end{smallmatrix}$	20	
	80 $\begin{smallmatrix} +0.030 \\ 0 \end{smallmatrix}$	100 ± 0.011	100,120 $\begin{smallmatrix} +0 \\ -0.2 \end{smallmatrix}$	25	
	100 $\begin{smallmatrix} +0.035 \\ 0 \end{smallmatrix}$	120 ± 0.011	150 $\begin{smallmatrix} +0 \\ -0.2 \end{smallmatrix}$		
	120 $\begin{smallmatrix} +0.035 \\ 0 \end{smallmatrix}$	140 ± 0.0125	180 $\begin{smallmatrix} +0 \\ -0.2 \end{smallmatrix}$		

Order / 주문예 Model No. - EA
SGB-30-50-10EA

가이드 부상

SGFB



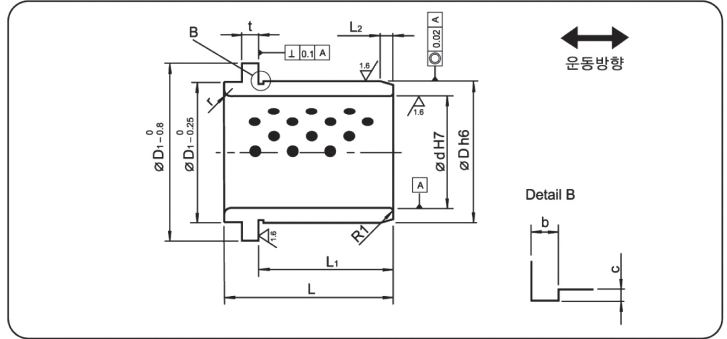
Material : #500SP(CAC304 + Graphite)

Model No.	내경	외경		길이	플렌지두께	R
	d	D	D1	L	L1	
SGFB	25 $\begin{smallmatrix} +0.021 \\ 0 \end{smallmatrix}$	35 $\begin{smallmatrix} +0.025 \\ +0.009 \end{smallmatrix}$	45	40 $\begin{smallmatrix} 0 \\ -0.3 \end{smallmatrix}$	7	10
	30 "	40 "	50	50 "		
	40 $\begin{smallmatrix} +0.025 \\ 0 \end{smallmatrix}$	55 $\begin{smallmatrix} +0.030 \\ +0.011 \end{smallmatrix}$	65	70 "		
	50 "	65 "	75	80 "		
	60 $\begin{smallmatrix} +0.030 \\ 0 \end{smallmatrix}$	75 "	85		10	20
	65 "	80 "	90	120 "		
	80 "	100 $\begin{smallmatrix} +0.035 \\ +0.013 \end{smallmatrix}$	110	100 "		
				140 "		
				100 "		
				140 "		

Order / 주문예 Model No. - EA
SGB-30-50-10EA

가이드 부상

SG09834



Material : #500SP(CAC304 + Graphite)

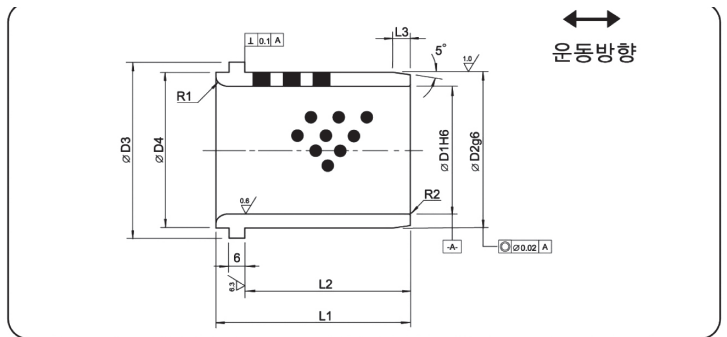
Model No.	d	H7	D	h6	L	D1	L1	L2	t	r	bx c
SG09834-025	25	$+0.021$ 0	32	0 -0.016	40	40	30	3	6.3	3	0.6x0.3
SG09834-032	32	$+0.025$ 0	40		50	50	40	4			
SG09834-040	40		50		63	63	50	5			
SG09834-050	50	$+0.030$ 0	63	0 -0.019	71	71	56	6.3	10	5	1.0x0.4
SG09834-063	63		80	80	90	63	8	6			
SG09834-080	80		100	0 -0.022	100	112	80	10		8	
SG09834-100	100	$+0.035$ 0	125	0 -0.025	125	140	106	12.5	10	10	
SG09834-125	125	$+0.040$ 0	160		160	180	132	16	12		
SG09834-160	160	200	0 -0.029		200	220	170	16	18		



Order / 주문예 [Model No.] - EA
SG09834-025-10EA (주문생산)

가이드 부상

SG061



Material : #500SP(CAC304 + Graphite)

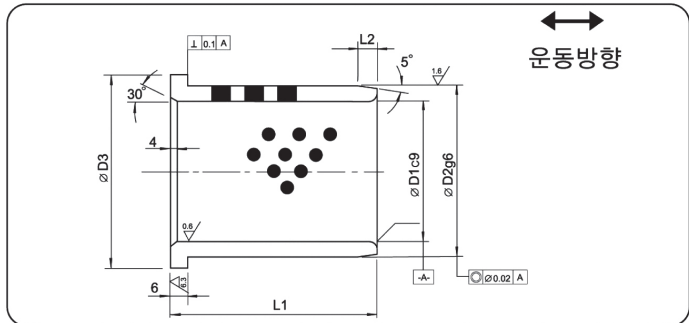
SGO NANMS CODE	D1	D2	D3	D4	L1	L2	L3	R1
SG0612540	25	32	40	32	40	30	4	3
SG0613250	32	40	50	40	50	40	4	
SG0614063	40	50	63	50	63	50	5	
SG0615071	50	63	71	63	71	56	6	5
SG0616380	63	80	90	80	80	63	8	6
SG0618010	80	100	112	100	100	80	10	8
SG0611012	100	125	140	125	125	106	12	10
SG0611114	115	140	155	140	140	120		
SGO 11216	125	160	180	160	160	132		



Order / 주문예 [Model No.] - EA
SG0613250-10EA (주문생산)

가이드 부상

SG071



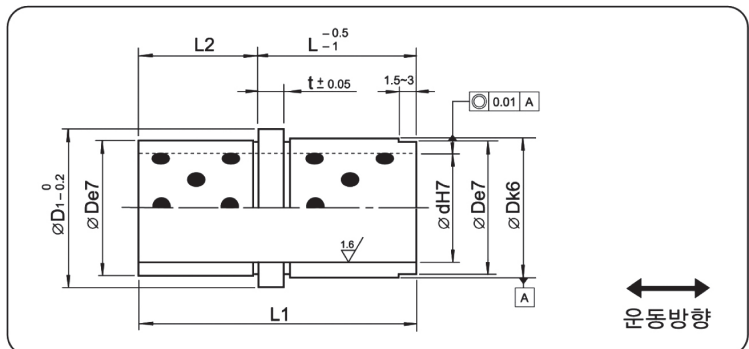
Material : #500SP(CAC304 + Graphite)

SGO Model No.	D1	D2	D3	L1	L2
SGO712540	25	32	40	40	4
SGO713250	32	40	50	50	4
SGO714055	40	50	63	55	5
SGO715063	50	63	71	63	6
SGO716375	63	80	90	75	8
SGO718090	80	100	112	90	10
SGO711011	100	125	140	115	12
SGO711213	125	160	180	138	12

Order / 주문예 Model No. - EA
SGO713250-10EA (주문생산)

이젝터 가이드 부상

SEGB1



Material : #500SP(CAC304 + Graphite)

Model No	d	L	L1	L2	t	D	공차		D1	dH7	
							e7	k6			
SEGB1	9	009	15	6	3	14	-0.032	+0.012	16	9	+0.015 0
	10	017	26	9			-0.050	+0.001		10	
	14	017	39	17	6	20	-0.040 -0.061	+0.015 +0.002	25	14	+0.018 0
	15	022								15	
	18	022								18	
	20	027								20	
	22	027	49	22					35	22	+0.021 0
	24	036	63	24							
	30	036	27	30	30						
	32	046			73	47	32	+0.025 0			

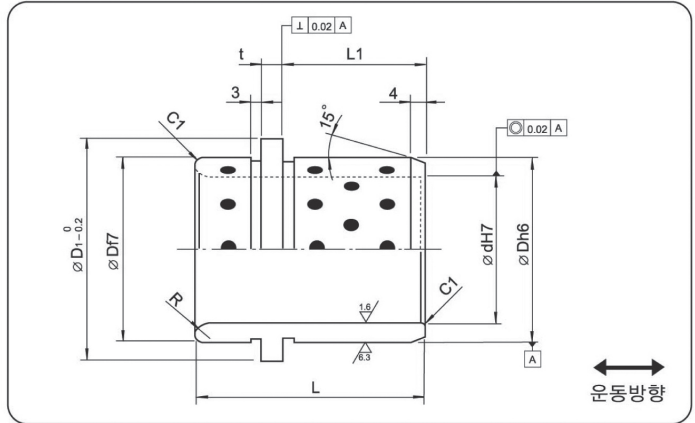
Order / 주문예 Model No. - EA
SEGB1-24-036-10EA (주문생산)

이젝터 가이드 부상

SEGB2



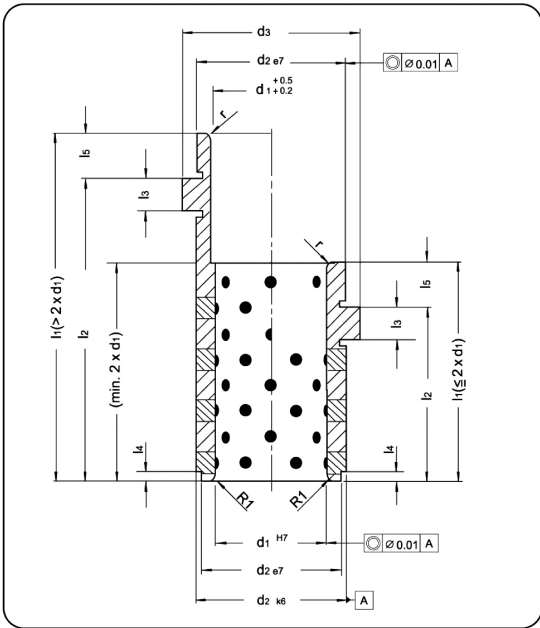
Material
#500SP(CAC304 + Graphite)



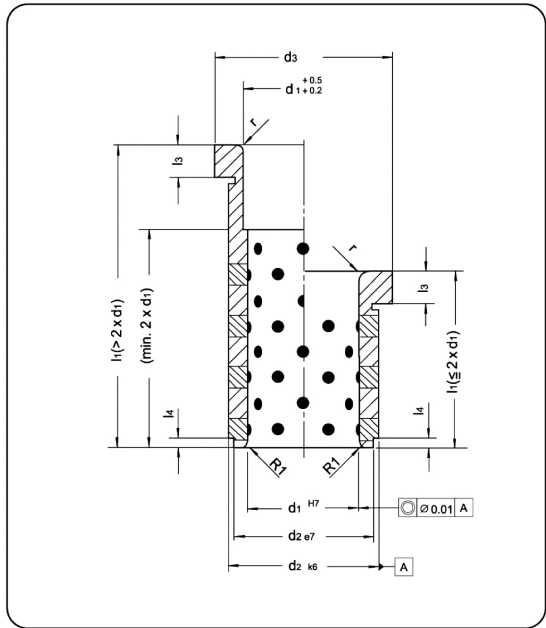
Model No.	d	L	L1	t	Dt7	Dh6	D1	dh7	R			
SEGB2	25	25	43	24	7.5	35	35	0	40	25	+0.021 0	3
	30	30										
	40.1	40	60	35.5	6	50	50	-0.016	59.9	40	+0.025 0	4
	40.2		64	39.5								
	50.3	50	77	44.5	8	63	63	0	71.9	50	+0.030 0	4
	50.4		92	55.5								
	60	60	78	49	7.5	80	80	-0.019	86	60	+0.030 0	3
	63.5	63	95	55.5	8							
	63.6		100	62.5								
	63.7		108									

Order / 주문예 Model No. - EA
SEGB2-40.1--10EA (주문생산)

SEGB3



SEGB4



d1	9/10	14/15	18/20	22/24	30/32	40/42
d2	14	20	26	30	42	54
d3	16	25	31	35	47	60
l3	3	6	6	6	6	10
l4	1.5	2	2	3	4	5
l5	3	6	8	8	8	12
r	0.5	1	2	3	3	3
l1	l2					
15	12	●				
20	17	●				
23	17		●			
25	17			●		
25	22	●				
28	22		●			
30	22			●		
33	27		●			
35	27			●		
39	36	●			●	
42	36		●			
44	36			●		
52	46		●			
54	46			●		
58	46				●	
62	56		●			
64	56			●		
68	56				●	
74	66		●			
78	66			●		
84	76		●			
88	76			●		
94	86		●			
98	86			●		
104	96		●			
108	96			●		
124	116		●			
128	116				●	
148	136					●
168	156					●

d1	9/10	12	14/15	16	18/20	22/24	30/32	40/42
d2	14	18	20	22	26	30	42	54
d3	16	23	25	27	31	35	47	60
r	0.5	1	1	2	2	3	3	3
l3	3	6	6	6	6	6	6	10
l4	1.5	2	2	2	2	3	4	5
l1								
12	●							
17	●		●	●	●	●		
22	●	●						
27	●	●	●	●				
36	●	●	●	●	●	●		
46	●	●	●	●	●	●	●	
56	●	●	●	●	●	●	●	●
66					●	●	●	●
76					●	●	●	●
86						●	●	●
96					●	●	●	●
116							●	●
136								●
156								●

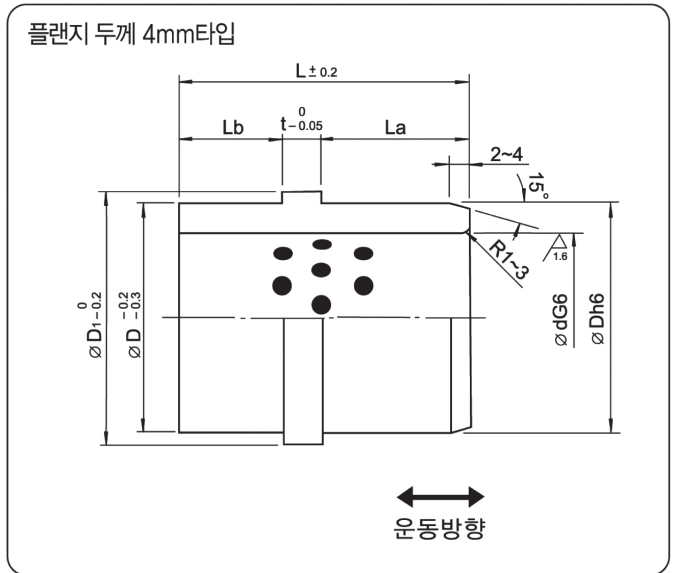
Order / 주문예 Model No. - EA
SEGB3-9-17-10EA (주문생산)

이젝터 가이드 부상

SEGB5

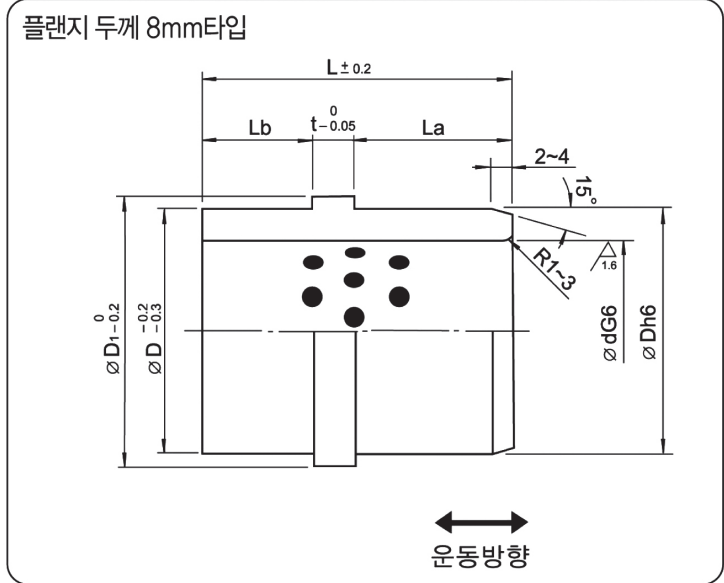


Material
#500SP(CAC304 + Graphite)



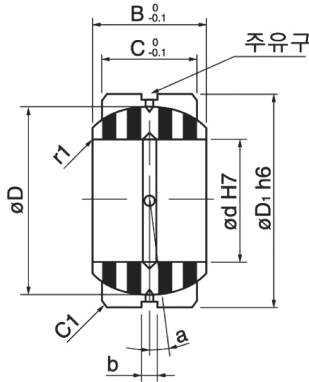
Model No.	d	L	dG6	Dh6	D1	La	Lb	t
SEGB5	16	26	+0.017 +0.006	25	0 -0.013	30	12	4
		28						
		33						
		38						
	20	26	+0.020 +0.007	30	0 -0.016	35	12	
		28						
		33						
		38						
	25	26	+0.025 +0.009	35	0 -0.019	40	12	
		28						
		33						
		38						
	30	33	46	52	57	14	15	
		38						
		43						
	35	38	52	62	67	19	20	
43								
48								
40	48	62	62	67	24	29		
	53							
50	48	62	62	67	24	29		
	53							

Order / 주문예 -
SEGB5-30-43-10EA (주문생산)



Model No.	d	L	dG6	Dh6	D1	La	Lb	t	
SEGB6	25	33	25	35	40	19	6	8	
		38				24			
	30	48	30	40		45	29		11
		47				24	15		
	35	52	35	45		47	29		16
		63				50	39		
	40	60	40	50	55	32	20		
		70				42			
		78				49	21		
		57				24	25		
	45	67	45	55	60	29	30		
		88				59	21		
	50	98	50	62	67	69	30		
		67				29			40
	60	87	60	74	82	39	30		
		67				29	40		
	87								

Order / 주문예 -
 SEG6-25-38-10EA (주문생산)



T 상대 축 공차
 d8 : 일반적 사용, 고하중
 e7 : 일반적 사용, 저하중

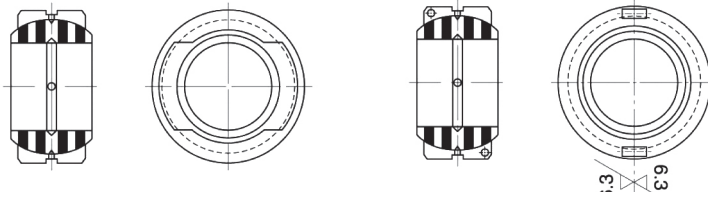
T 하우징 경 공차
 N7 : 일반사용, 고하중
 M7 : 일반사용, 저하중

M 재질
 내륜 : #500SP CAC304 + Graphite
 외륜 : 베어링강 SUJ2

구면베어링 조립방법

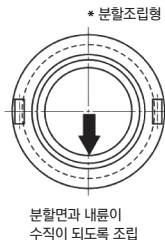
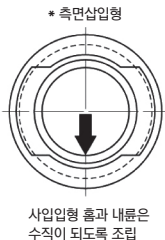
* Ød015~090 (측면삽입형)

* Ød100 이상 (분할조립형)

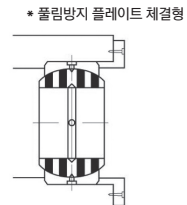
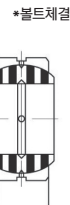
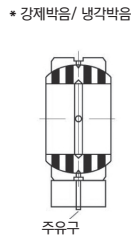


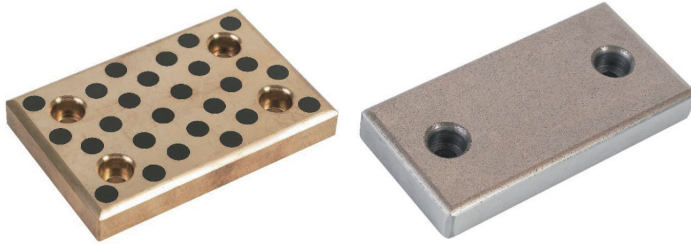
d H7	D1 h6	B	C	D	b	정렬각도 a	허용 레이디얼 하중 Rd(kN)	허용 슬러스트 하중 Td(kN)	허용 Rdv값 kN·m/min	제품코드	
15	+0.018 0	26	-0.013	12	9	22	8	6.5	0.5	6.5	015
20		32		16	14	28	4	12.6	1.4	12.6	020
25	+0.021 0	42	0 -0.016	21	18	36	5	21.8	2.5	21.8	025
30		50		27	23	44	6	32.0	3.5	32.0	030
35		55		30	26	49	5	43.7	4.8	43.7	035
40	+0.025 0	62	0 -0.019	33	28	55	6	54.7	5.7	54.7	040
45		72		36	31	62	4	69.7	7.2	69.7	045
50		80		42	36	70	5	92.4	10	92.4	050
60	+0.030 0	100	0 -0.022	53	45	90	6	143	16	143	060
70		110		58	50	99	5	181	20	181	070
80		130		70	60	115	6	254	30	254	080
90		140		76	65	125	6	313	36	313	090
100	+0.035 0	160	0 -0.025	88	75	145	6	544	64	544	100
110		170		93	80	155	5	642	73	642	110
120		190		105	90	170	6	797	94	797	120
130		200		110	95	180	5	880	105	880	130
140	+0.040 0	210	0 -0.029	90	70	180	7	668	56	668	140
150		220		120	105	200	5	1135	129	1135	150
160		230		105	80	200	8	891	73	891	160
180		260	0 -0.032	105	80	225	6	1002	74	1002	180
200	+0.046 0	290	0 -0.036	130	100	250	7	1434	117	1434	200
220		320		135	100	275	8	1577	118	1577	220
240		340	0 -0.036	140	100	300	8	1720	118	1720	240
260		370		150	110	325	7	2072	143	2072	260
280	+0.052 0	400	0 -0.040	155	120	350	6	2455	172	2455	280
300		430		165	120	375	7	2630	172	2630	300

구면베어링 조립방법



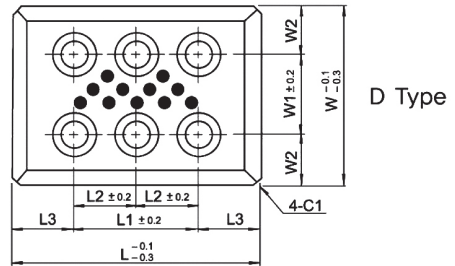
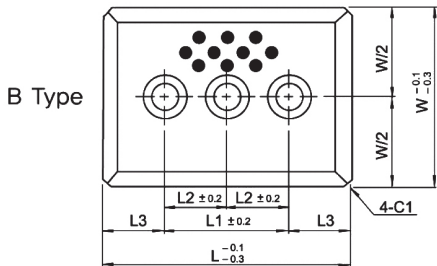
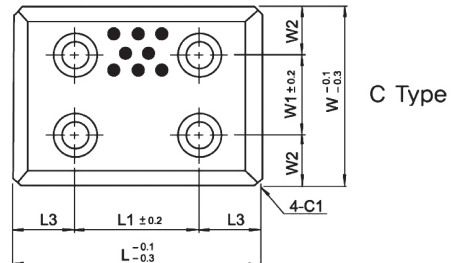
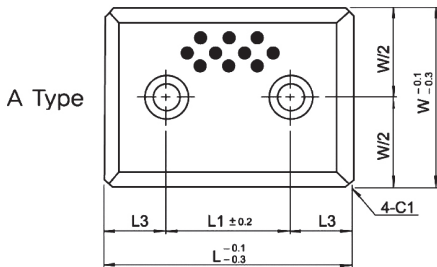
조립방법



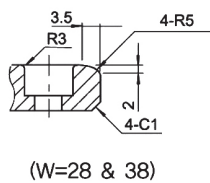
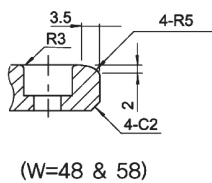
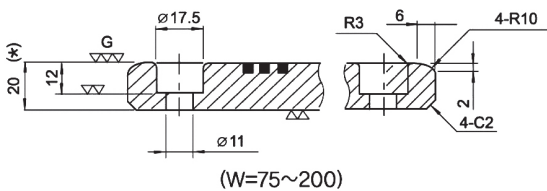


M Material
 SWP : #500SP(CA304 + Graphite)
 SBP : SS400 + Sintered Layer

T (*) 두께 공차 : ±0.01



■ 모따기 규격



(1) W=28 & 38 규격



(2) W=48 & 200 규격



운동방향

(3) SS400 + Sintered Layer

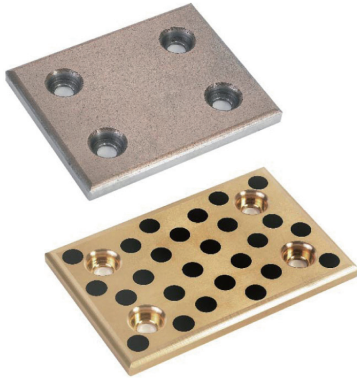


운동방향

Model No.	W	L	볼트구멍					Type			
			W1	W2	L1	L2	L3				
SWP SBP	28	75			45	-	15	A			
		100			50		25				
		150			100						
		200			150						
		250			200						
		300			250				125	B	
	38	75			45	-	15	A			
		100			50		25				
		125			75						
		150			100						
		200			150						
		250			200						
	300	250	125	B							
	48	75				45	-	15	A		
		100				50		25			
		125				75					
		150				100					
		200				150					
		250		200							
	300	250	125	B							
	58	75				45	-	15	A		
		100				50		25			
		150				100					
		200				150					
		250				200					
		300		250		125				B	
	75	75			25	-	25	A			
		100			50						
		125			75						
		150			100						
		200			150						
		250			200						
	300	250	125	B							
	100	100	50		25	50	-	50(25)	C(D)		
		125				75					
		150				100					
		200				150					
		250				200					
		300		200(250)		-(125)					
	125	125	50	37.5	75	-	25	C			
		150			100						
		200			150						
		250			200						
		300			200(250)				-(125)	50(25)	C(D)
		350			200				-	75	C
	150	150	100	25	100	-	25	C			
		200			150						
		250			200						
300		250			-(125)				C(D)		
200	200	150		150	-		C				
	250			200							
	250			200							
	300			250				-(125)	C(D)		



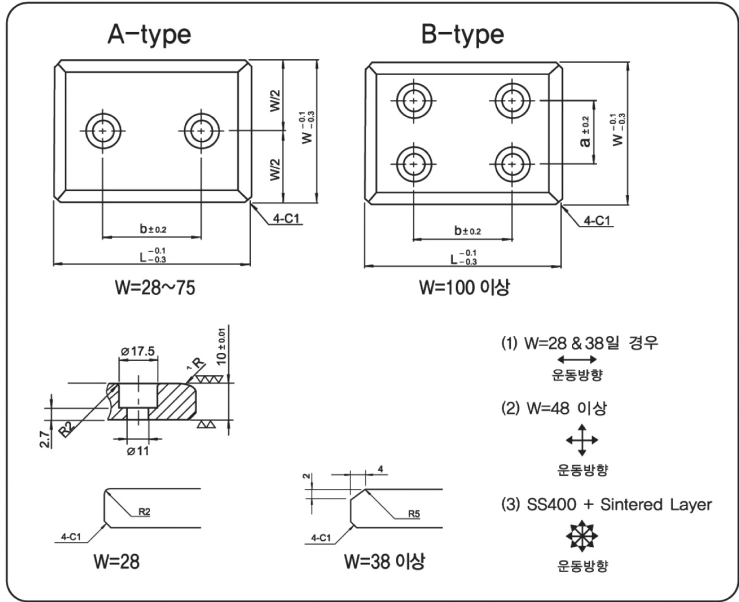
Order / 주문예 Model No. - EA
SWP-75-100-10EA / SBP-75-100-10EA



Material

STWP : #500SP(CAC304 + Graphite)
SBPT : SS400+Sintered Layer

조립볼트 : 낮은머리 볼트



Model No.	W	L	a	b	Type	볼트 구멍 수량
STWP SBPT	28	75	-	45	A	2
		100		50		
		125		75		
		150		100		
	38	75	-	45		
		100		50		
		125		75		
		150		100		
	48	75	-	45		
		100		50		
		125		75		
		150		100		
	58	75	-	45		
		100		50		
		125		75		
		150		100		
	75	75	-	25		
		100		50		
		125		75		
		150		100		
175		125				
200		150				
100	100	50	50	B	4	
	125		75			
	150		100			
	200		150			
125	150	50	100			
	200		150			
	250		200			
150	150	100	100			
	200		150			
	250		200			

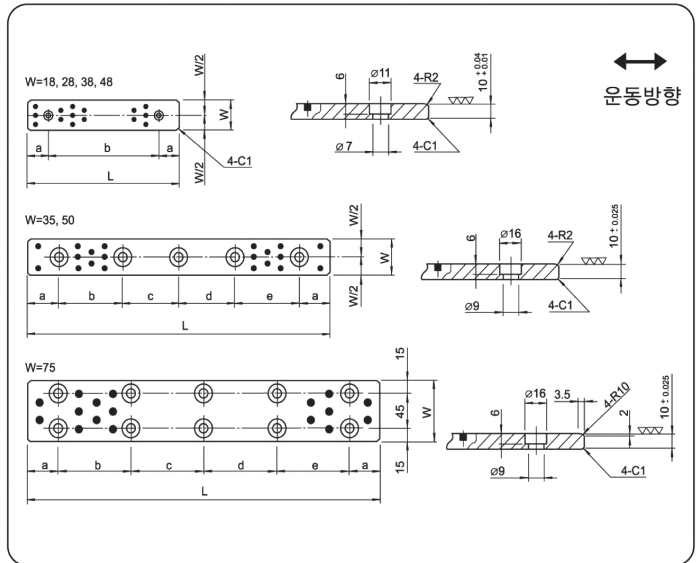
Order / 주문예 -
STWP-75-100-10EA / SBPT-75-100-10EA

슬라이딩 플레이트

SP



Material
#500SP(CAC304 + Graphite)



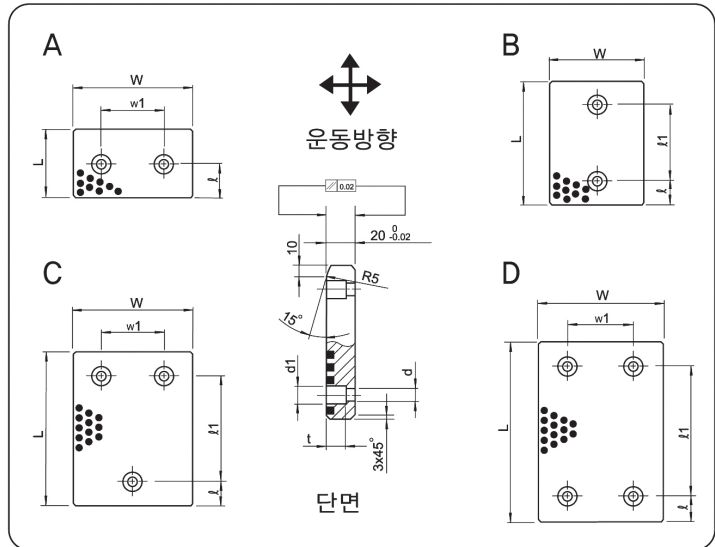
Model No.	W	L		볼트					조립볼트	
		치수	공차	a	b	c	d	e	Standard	Quantity
SP	18	75	0	15	45				M6	2
		100		25	50					
		125		25	75					
		150		25	100					
	28	75	-0.2	15	45				M6	2
		100		25	50					
		125		25	75					
		150		25	100					
	35	100	0	20	60				*M8	3
		150		20	55	55				
		200		20	55	50	55			
		250		20	70	70	70			
		300		20	65	65	65	65		
	38	100	-0.3	20	80	75	75	80	M6	2
		150		15	45					
		100		25	50					
		125		25	75					
		150		25	100					
	48	75	0	15	45				M6	2
		100		25	50					
		125		25	75					
		150		25	100					
		200		20	60					
	50	150	0	20	55	55			*M8	3
200		20		55	50	55				
250		20		70	70	70				
300		20		65	65	65	65			
400		20		90	90	90	90			
75	150	-0.5	20	90	90	90	90	*M8	5	
	200		20	110						
	250		20	80	80					
	300		20	105	105					
	400		20	85	90	85				
	500		20	120	120	120	115			

Order / 주문예 Model No. - EA
SP-38-100-10EA

* 표기는 짝은 머리 볼트입니다.

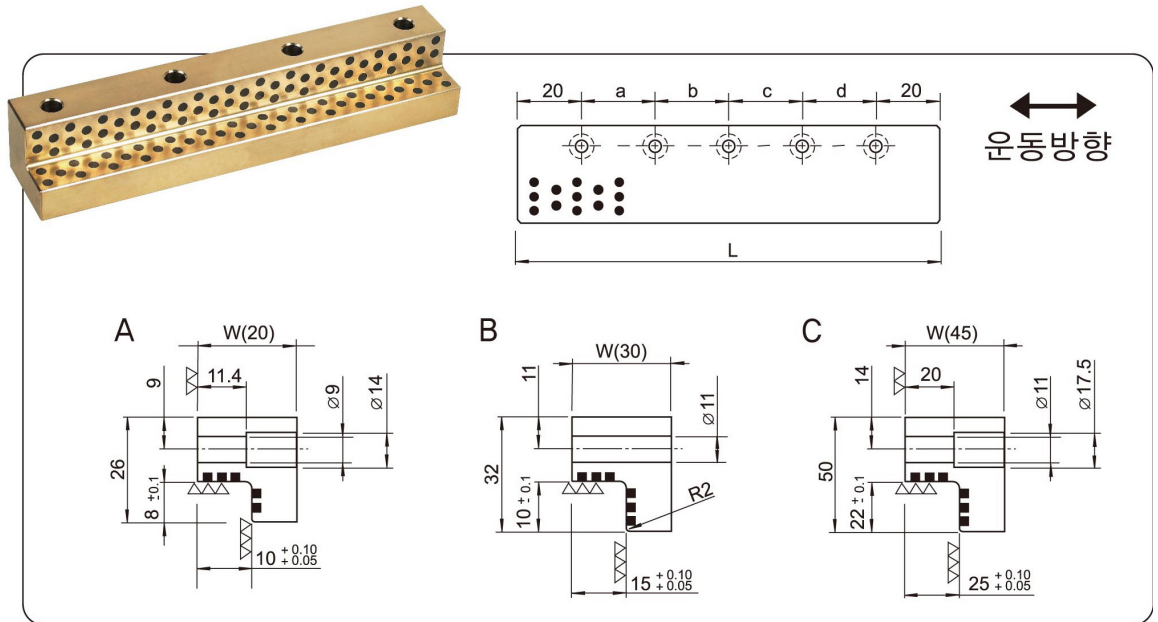


M Material
 SWPV : #500SP(CAC304 + Graphite)
 SBPV : SS400+Sintered Layer



Model No.	W	L	ℓ	ℓ 1	w1	d	d1	t	조립볼트 수량	Type					
SWPV SBPV	50	80	25	30	-	13.5	20	13	2	B					
		100		50											
		125		75											
		160		110											
		200		150											
	80	50	40	-	30	-	13.5	20		13	2	A			
		80		30											
		100		50											
		125		75											
		160		110											
		200		150											
		250		170											
	315	235													
	100	50	25	-	50	-	13.5	20	13	2	A				
		80		40											
		100	25	50	-						13.5	20	13	2	B
		125		75											
		160		110											
		200		150											
		250		170											
	315	235													
	125	50	25	-	75	-	13.5	20	13	3	A				
		80		40											
		100	25	50	-						13.5	20	13	3	C
		125		75											
		160		110											
		200		150											
		250		170											
315	235														
165	50	25	-	110	-	13.5	20	13	4	A					
	80		40												
	100	25	50	-						13.5	20	13	4	C	
	125		75												
	160		110												
	200		150												
	250		170												
315	235														

Order / 주문예
 Model No. - W - L - M - EA
 SWPV-40-100-SP-10EA



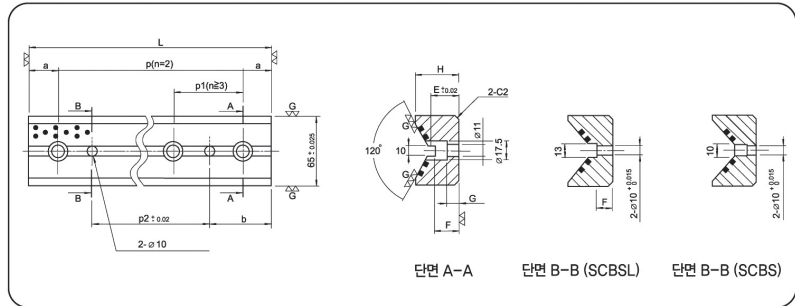
M Material
#500SP(CAC304 + Graphite)

Model No.	W	L	볼트구멍 위치				고정볼트		Type
			a	b	c	d	Standard	Quantity	
SL	20	100	60	-	-	-	M8	2	A
		150	55	55	-			3	
		200	50	55	-			4	
	30	100	60	-	-	-	M10	2	B
		150	55	55	-			3	
		200	50	55	-			4	
	45	200	55	50	55	65	M10	5	C
		250	70	70	70				
		300	65	65	65				
		350	80	75	75				

Order / 주문예
 Model No. - W - L - EA
 SL-20-100-10EA

캠 버텀 플레이트

SCBS / SCBSL



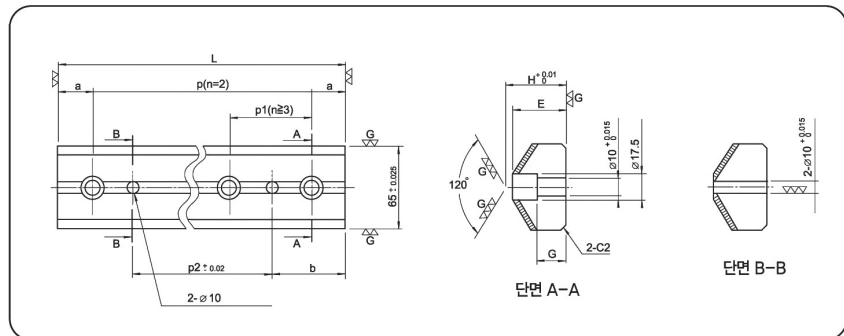
Material
#500SP(CAC304 + Graphite)

Model No.	L	H	E	F	G	a	p1	볼트구멍수량	b	p2	P
SCBS	100	35	18	15	8	20	50	2	40	20	60
	125					3		25			
	150					4		50			
	200					5		100			
	250					6		150			
	300							200			
SCBSL	100	37	20	20	10	20	75	2	50	20	60
	125					3		25		75	
	150					4		50		100	
	200					5		100		150	
	250					6		150		200	
	300							200			

Order / 주문예 Model No. - L - EA
SCBS-150-10EA

캠 버텀 스틸 플레이트

SCBSP / SCBSPL

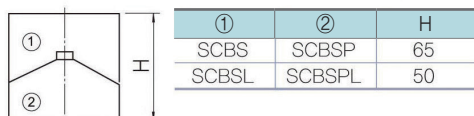


Material : SM45C
열처리 : 빗금친 부위는 표면
고주파 열처리
HRC 50 이상

Model No.	L	H	E	G	a	p1	볼트구멍수량	b	p2	P
SCBSP	100	47	44	20	20	50	2	40	20	60
	125				3		25			
	150				4		50			
	200				5		100			
	250				6		150			
	300						200			
SCBSPL	100	37	26	10	20	75	2	50	20	60
	125				3		25		75	
	150				4		50		100	
	200				5		100		150	
	250				6		150		200	
	300						200			

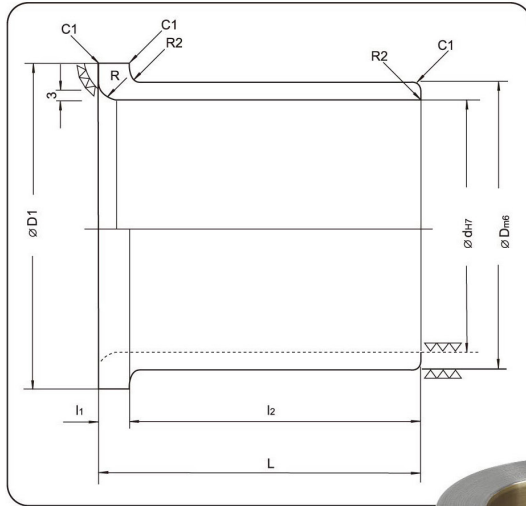
Order / 주문예 Model No. - L - EA
SCBSP-150-10EA

■ 조합 예



가이드 플랜지 부상

SBSF



Model No.	ØdH ₇	ØDm ₆	ØD ₁	L	l ₁
SBSF-25	25	35	45	40	7
SBSF-30	30	40	50	50	10
SBSF-40	40	55	64	70	10
SBSF-50	50	65	75	80	10
SBSF-60	60	75	85	80	10
SBSF-65S	65	80	90	80	10
SBSF-65L	65	80	90	120	10
SBSF-80S	80	100	110	100	10
SBSF-80L	80	100	110	140	10
SBSF-100S	100	120	130	100	10
SBSF-100L	100	120	130	140	10



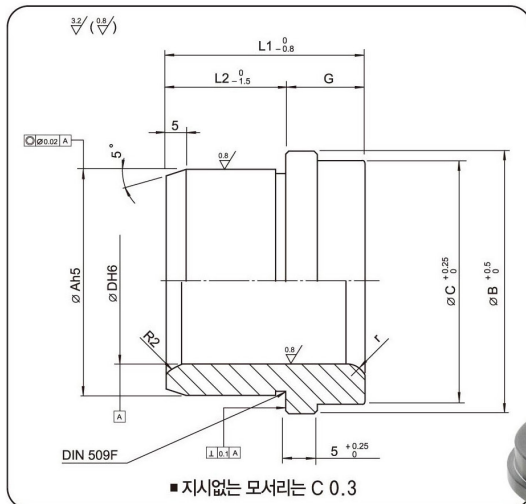
Order / 주문예

Model No. - EA

SBSF-25-10EA

가이드 부상

SB100



D	18-19	24-25	30-32	40-42	50-52	63	80
A	28	38	45	54	65	81	100
B	34	44	53	63	79	92	111
C	29	39	48	58	74	87	106
G	13	13	13	13	13	13	13
L1	31	36	43	51	61	74	91
L2	18	23	30	38	48	61	78
r	3	3	3	3	4	5	6



Order / 주문예

Model No. - D - EA

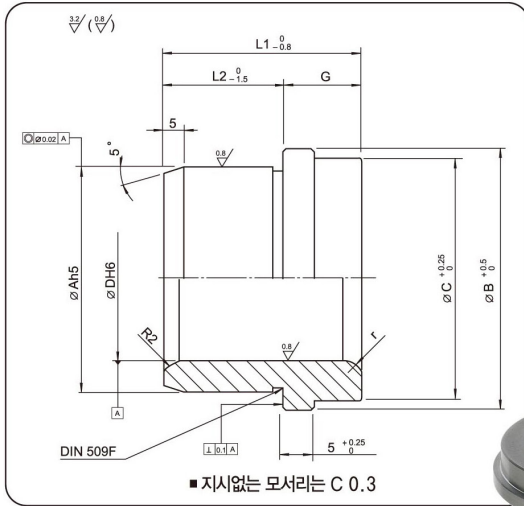
SB100-18-10EA

Order / 주문예
Model No. - EA
SBSF-25-10EA

Order / 주문예
Model No. - D - EA
SB100-18-10EA

가이드 부싱

SB101



D	18-19	24-25	30-32	40-42	50-52	63
A	28	38	45	54	65	81
B	34	44	53	63	79	92
C	29	39	48	58	74	87
G	13	13	13	13	13	13
L1	50	55	60	67	75	90
L2	37	42	47	54	62	77
r	3	3	3	3	4	5



Order / 주문예

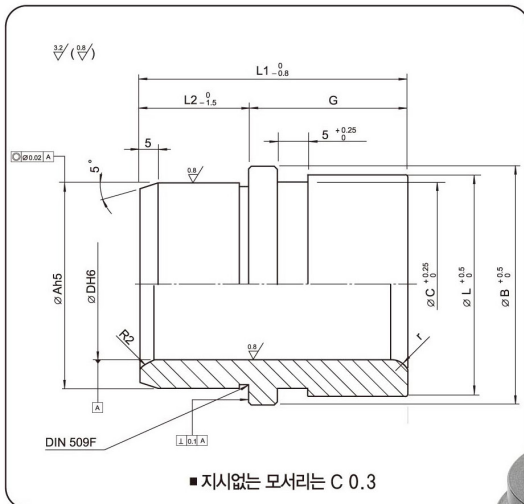
Model No. - [D] - [EA]

SB101-24-10EA(주문생산)



가이드 부싱

SB102



D	18-19	24-25	30-32	40-42	50-52	63	80
A	28	38	45	54	65	81	100
B	34	44	53	63	79	92	111
C	29	39	48	58	74	87	106
G	32	32	34	37	40	42	52
L1	50	55	60	67	75	90	100
L2	18	23	26	30	35	48	48
L	31	41	50	60	76	89	108
r	3	3	3	3	4	5	6



Order / 주문예

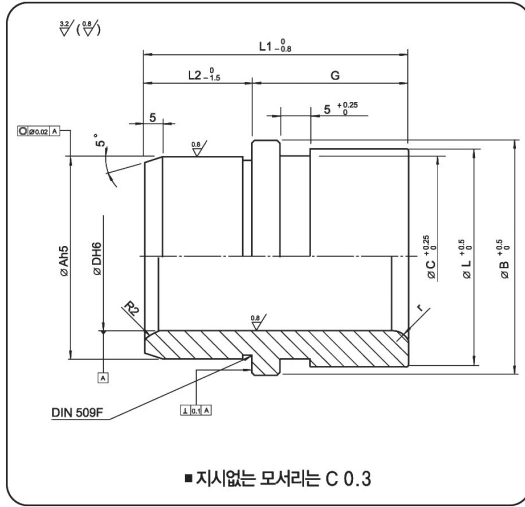
Model No. - [D] - [EA]

SB102-40-10EA(주문생산)



가이드 부상

SB103



D	18-19	24-25	30-32	40-42	50-52	63	80
A	28	38	45	54	65	81	100
B	34	44	53	63	79	92	111
C	29	39	48	58	74	87	106
G	52	57	64	70	75	82	102
L1	70	80	90	100	110	130	150
L2	18	23	26	30	35	48	48
L	31	41	50	60	76	89	108
r	3	3	3	3	4	5	6



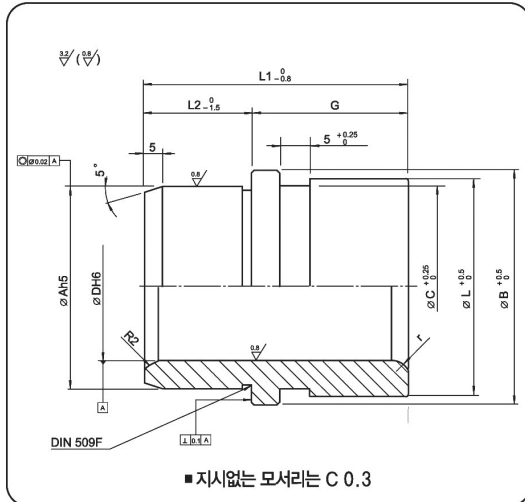
Order / 주문예

Model No. - [D] - [EA]

SB103-63-10EA(주문생산)

가이드 부상

SB104



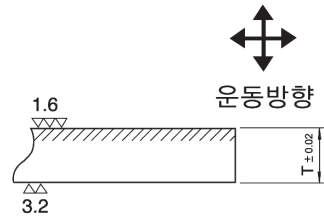
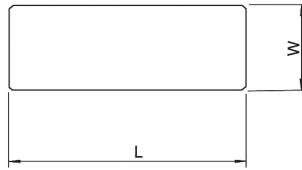
D	18-19	24-25	30-32	40-42	50-52	63	80
A	28	38	45	54	65	81	100
B	34	44	53	63	79	92	111
C	29	39	48	58	74	87	106
G	43	48	53	53	53	63	73
L1	70	80	90	100	110	130	150
L2	27	32	37	47	57	67	77
L	31	41	50	60	76	89	108
r	3	3	3	3	4	5	6



Order / 주문예

Model No. - [D] - [EA]

SB104-50-10EA(주문생산)

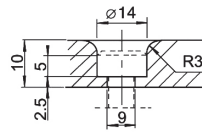


권장볼트 사양

M8

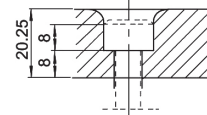
T=10

T=20, 25

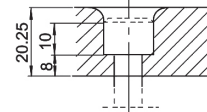
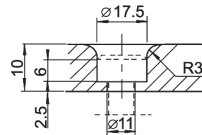


M10

T=10



T=20, 25



Model No.	W	L	T
SSBT	75	320	10
	100		
	125		
	150		20
	75		
	100		
	125		
	150		
	100		



Order / 주문예

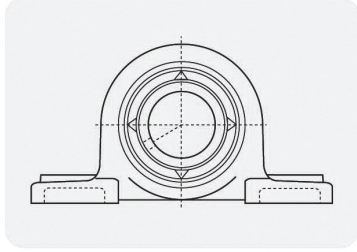
Model No. - W - L - EA

SSBT-100-20-10EA

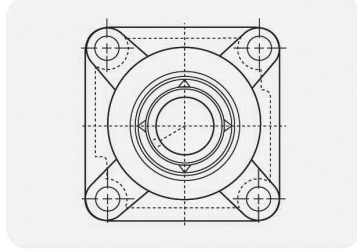
SGO U/C베어링

종류

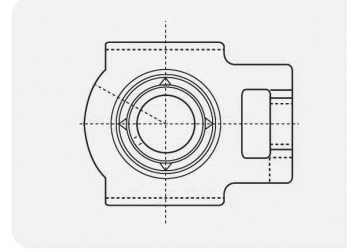
◆ 케이스별



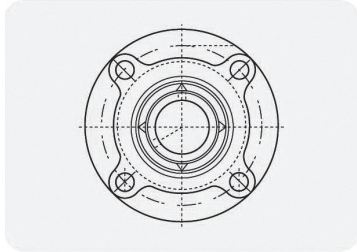
UCP형



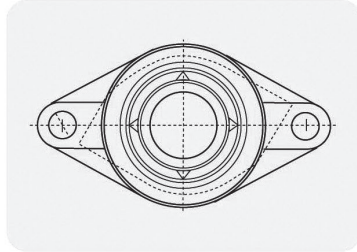
UCF형



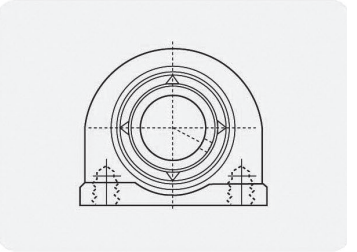
UCT형



UCFC형



UCFL형



UCUP형

* 상기 외에도 CASE의 국내산업이 가능한 이행규격도 수주 생산합니다.
* 비표준품은 발주 전에 필히 당사와 기술검토를 요망합니다.

◆ 베어링 규격별

Model No.	축경(mm)	Model No.	축경(mm)	Model No.	축경(mm)	Model No.	축경(mm)	Model No.	축경(mm)
UC 201	12	UC 210	50	UC 305	25	UC 314	70	UC 324	120
UC 202	15	UC 211	55	UC 306	30	UC 315	75	UC 326	130
UC 203	17	UC 212	60	UC 307	35	UC 316	80	UC 328	140
UC 204	20	UC 213	65	UC 308	40	UC 317	85		
UC 205	25	UC 214	70	UC 309	45	UC 318	90		
UC 206	30	UC 215	75	UC 310	50	UC 319	95		
UC 207	35	UC 216	80	UC 311	55	UC 320	100		
UC 208	40	UC 217	85	UC 312	60	UC 321	105		
UC 209	45	UC 218	90	UC 313	65	UC 322	110		



Order / 주문예

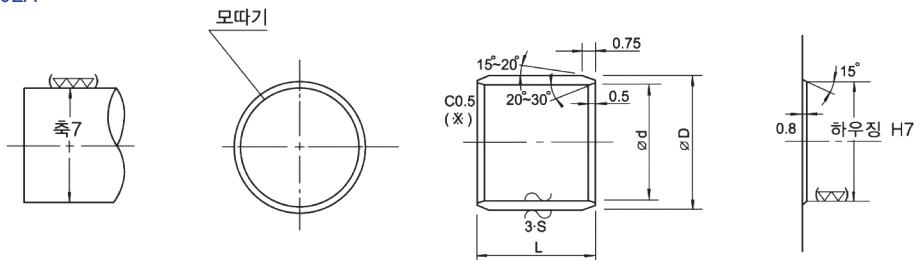
Model No. - EA

UC201-10EA

부싱	축경		하우징경	길이								
	내경 ϕd	외경 ϕD		3	4	5	6	7	8	10	12	
3	5	3 ^{-0.025} _{-0.034}	5 (H7) ^{+0.012} ₀	0303	0304	0305	0306					
4	6	4 ^{-0.025} _{-0.037}	6 (H7) "		0404		0406		0408			
5	7	5 "	7 (H7) ^{+0.015} ₀	0503	0504	0505	0506		0508			
6	8	6 "	8 (H7) "			0605	0606	0607	0608	0610		
7	9	7 ^{-0.025} _{-0.040}	9 "			0705	0706	0707		0710	0712	
8	10	8 "	10 (H7) ^{+0.016} ₀			0805	0806	0807	0808	0810	0812	
9	11	9 "	11 "							0910		
10	12	10 "	12 (H7) ^{+0.016} ₀				1006	1007	1008	1010	1012	
12	14	12 ^{-0.025} _{-0.043}	14 "				1206		1208	1210	1212	
13	15	13 "	15 "						1308	1310		
14	16	14 "	16 "							1410	1412	
15	17	15 "	17 "						1508	1510	1512	
16	18	16 "	18 "							1610	1612	
17	19	17 "	19 "							1710		
18	20	18 "	20 (H7) ^{+0.021} ₀							1810	1812	
19	22	19 ^{-0.025} _{-0.045}	22 "							1910		
20	23	20 "	23 "							2010	2012	
22	25	22 "	25 "							2210	2212	
24	27	24 "	27 "									
25	28	25 "	28 "							2510	2512	
26	30	26 "	30 "									
28	32	28 "	32 (H7) ^{+0.025} ₀								2812	
30	34	30 "	34 "								3012	
31	35	31 ^{-0.025} _{-0.050}	35 "									
32	36	32 "	36 "									
35	39	35 "	39 "								3512	
38	42	38 "	42 "									
40	44	40 "	44 "								4012	
45	50	45 "	50 "									
50	55	50 "	55 (H7) ^{+0.030} ₀									
55	60	55 ^{-0.025} _{-0.055}	60 "									
60	65	60 "	65 "									
65	70	65 ^{-0.035} _{-0.066}	70 "									
70	75	70 "	75 "									
75	80	75 "	80 "									
80	85	80 "	85 (H7) ^{+0.035} ₀									
85	90	85 ^{-0.035} _{-0.066}	90 "									
90	95	90 "	95 "									
100	105	100 "	105 "									
110	115	110 "	115 "									
120	125	120 "	125 (H7) ^{+0.040} ₀									
130	135	130 "	135 "									
140	145	140 "	145 "									
150	155	150 "	155 "									
160	165	160 "	165 "									



Order / 주문예 Model No. - ϕd - L - EA
SDU-03-05-10EA



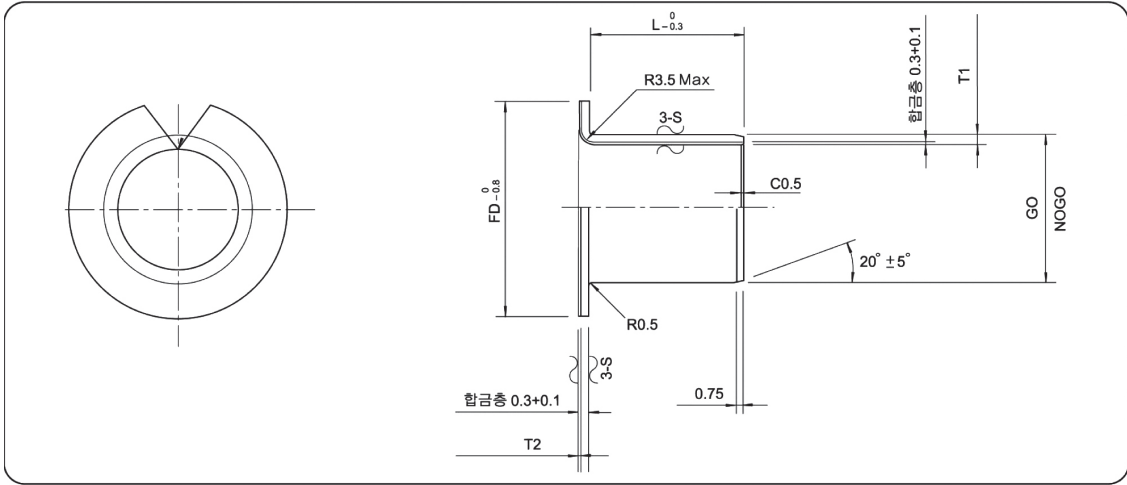
길이												
15	20	25	30	35	40	50	60	70	80	90	95	100
0815												
1015	1020											
1215	1220											
1315												
1415	1420											
1515	1520	1525										
1615	1620	1625										
1715												
1815	1820	1825										
1915												
2015	2020	2025	2030									
2215	2220	2225	2230									
2415	2420	2425	2430									
2515	2520	2525	2530	2535								
2615	2620	2625	2630									
2815	2820	2825	2830									
3015	3020	3025	3030	3035	3040							
3115		3125			3140							
	3220	3225	3230		3240							
	3520	3525	3530	3535	3540	3550						
	3820	3825	3830	3835	3840							
4015	4020	4025	4030	4035	4040	4050						
	4520	4525	4530	4535	4540	4550						
	5020	5025	5030	5035	5040	5050	5060					
		5525	5530	5535	5540	5550	5560					
			6030	6035	6040	6060						
			6530	6540	6550	6560						
			7030	7035	7040	7050	7060		7080			
			7530	7535	7540	7550	7560		7580			
					8040	8050	8060		8080			
					8540	8550	8560		8580			
					9040	9060				9090		
						10050		10070			10095	
						11050		11070			11095	
						12050		12070			12095	
						13050			13080			
						14050			14080			140100
						15050			15080			150100
						16050			16080			160100

 **사용조건**

허용범위				기계적 성질		
P면압 (kg/cm ²)	V선속도 (m/min)	PV값 (kg/cm ² ·m/min)	T온도 (°C)	인장강도 (kgf/mm ²)	선펙창 계수 (×10 ⁻⁶ /°C)	마찰 계수
250(1,400)	15(60)	1,050(2,100)	-200~+250	3800	11(습동면과 수평) 30(습동면과 수직)	0.04~0.18

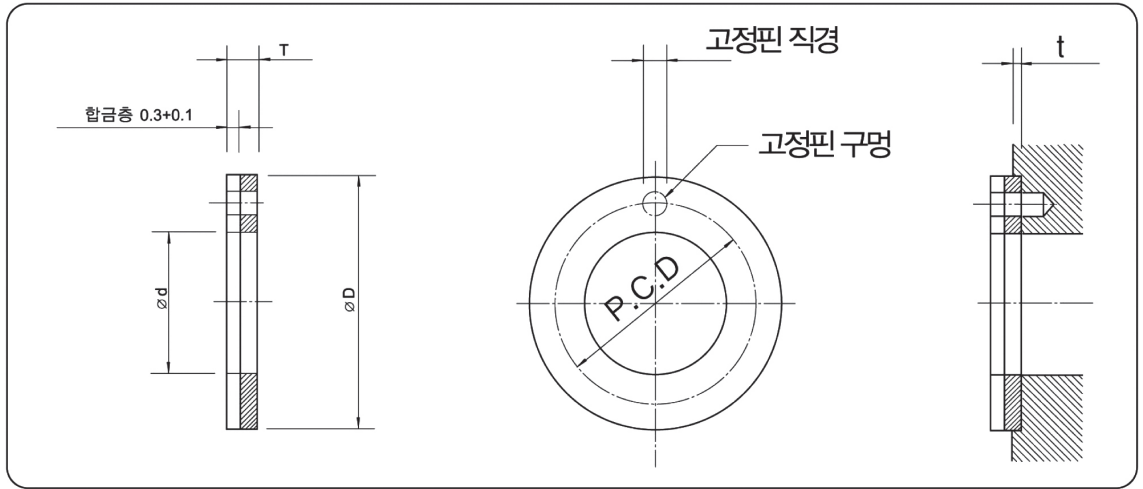
▶ () : 정적 허용면압 [정지상태 또는 매우 느린속도 (6m/min) 이하일때]

Die hole
 Air hole / Mounting hole
 Gas nozzle / Gas fitting
 Core unit
 Stearing / Gas release
 Packing lock set
 Rubber gasket ring
 Use case
 Air tool / Spindle holder
 Injection mold parts
 Guide pins
 Pneumatic parts
 Forming and casting
 Gas spring
 Spring



부싱	권장 가공 공차			두께		길이												
	내경 (Ød)	플랜지경 (ØFD)	허우징경 (+H7)	축경	T1	T2	6	8	10	12	15	20	25	30	40	50	60	
3	7	4.6	$^{+0.012}_0$	3	$0.8^0_{-0.035}$	$0.8^0_{-0.15}$												
4	9	5.6	"	4			0406-9											
5	10	7	$^{+0.015}_0$	5			0506-10											
6	12	8	"	6			0606-12	0608-12	0610-12									
7	13	9	"	7					0710-13	0712-13								
8	15	10	"	8					0806-15	0810-15	0812-15							
10	18	12	$^{+0.018}_0$	10	$1.0^0_{-0.025}$	$1.0^0_{-0.15}$	1006-18	1008-18	1010-18	1012-18	1015-18							
12	20	14	"	12			1206-20	1208-20	1210-20	1212-20	1215-20	1220-20						
14	22	16	"	14					1410-22	1412-22	1415-22	1420-22						
15	23	17	"	15					1510-23	1512-23	1515-23	1520-23	1525-23					
16	24	18	"	16					1610-24	1612-24	1615-24	1620-24	1625-24					
18	26	20	$^{+0.021}_0$	18					1810-26	1812-26	1815-26	1820-26	1825-26					
20	31	23	"	20					2010-31	2012-31	2015-31	2020-31	2025-31	2030-31				
22	33	25	"	22					2210-33	2212-33	2215-33	2220-33	2225-33					
24	35	27	"	24	$1.5^0_{-0.025}$	$1.5^0_{-0.15}$					2415-35	2420-35	2425-35	2430-35				
25	36	28	"	25					2510-36	2512-36	2515-36	2520-36	2525-36	2530-36				
26	38	30	"	26							2615-38	2620-38						
28	40	32	$^{+0.025}_0$	28							2812-40	2815-40	2820-40		2830-40			
30	42	34	"	30							3012-42	3015-42	3020-42	3025-42	3030-42	3040-42		
31	45	35	"	31									3125-45					
32	46	36	"	32	$2.0^0_{-0.025}$	$2.0^0_{-0.15}$						3220-46	3225-46	3230-46				
35	49	39	"	35									3520-49	3525-49	3530-49	3540-49	3550-49	
38	52	42	"	38								3820-52		3830-52	3840-52			
40	54	44	"	40									4012-54	4020-54	4025-54	4030-54	4040-54	4050-54
45	60	50	"	45								4520-60	4525-60	4530-60	4540-60	4550-60		
50	65	55	$^{+0.030}_0$	50								5020-65		5030-65	5040-65		5060-65	
55	70	60	"	55	$2.5^0_{-0.025}$	$2.5^0_{-0.15}$								5530-70	5540-70		5560-70	
60	75	65	"	60										6030-75	6040-75		6060-75	

Order / 주문예 | Model No. | - Ød - L - EA | SDUF-03-06-10EA



호칭 내경	제품코드	내경(Ød)	외경(ØD)	두께(T)	고정핀 구멍		하우징 깊이(t)
					직경	P.C.D	
6	SWC 06	8 ^{+0.25} ₀	16 ⁰ _{-0.25}	1.5 ^{-0.03} _{-0.08}	1,100 ^{+0.20} ₀	12 ±0.12	1.0 ^{+0.20} _{-0.05}
8	SWC 08	10 ^{+0.25} ₀	18 ⁰ _{-0.25}			14 ±0.12	
10	SWC 10	12 ^{+0.25} ₀	24 ⁰ _{-0.25}		1,625 ^{+0.25} ₀	18 ±0.12	
12	SWC 12	14 ^{+0.25} ₀	26 ⁰ _{-0.25}			20 ±0.12	
14	SWC 14	16 ^{+0.25} ₀	30 ⁰ _{-0.25}		2,125 ^{+0.25} ₀	23 ±0.12	
16	SWC 16	18 ^{+0.25} ₀	32 ⁰ _{-0.25}			25 ±0.12	
18	SWC 18	20 ^{+0.25} ₀	36 ⁰ _{-0.25}		3,125 ^{+0.25} ₀	28 ±0.12	
20	SWC 20	22 ^{+0.25} ₀	38 ⁰ _{-0.25}			30 ±0.12	
22	SWC 22	24 ^{+0.25} ₀	42 ⁰ _{-0.25}			33 ±0.12	
24	SWC 24	26 ^{+0.25} ₀	44 ⁰ _{-0.25}			35 ±0.12	
25	SWC 25	28 ^{+0.25} ₀	48 ⁰ _{-0.25}		4,125 ^{+0.25} ₀	38 ±0.12	
30	SWC 30	32 ^{+0.25} ₀	54 ⁰ _{-0.25}			43 ±0.12	
35	SWC 35	38 ^{+0.25} ₀	62 ⁰ _{-0.25}			50 ±0.12	
40	SWC 40	42 ^{+0.25} ₀	66 ⁰ _{-0.25}		2.0 ^{-0.03} _{-0.08}	54 ±0.12	
45	SWC 45	48 ^{+0.25} ₀	74 ⁰ _{-0.25}	61 ±0.12			
50	SWC 50	52 ^{+0.25} ₀	78 ⁰ _{-0.25}	65 ±0.12			

Order / 주문예 Model No.] - EA
 SWC06-10EA



성민엔지니어링
Seongmin Engineering